



Higham Avenue

Holborough Lakes, Snodland, ME6 5GE

Asking Price £210,000



MADISON BROOK
INTERNATIONAL

Higham Avenue, Holborough Lakes, Snodland, ME6 5GE

Two bedroom apartment in a New England style development.

Features include a beautifully fitted kitchen, leading onto an open-plan lounge area, two double bedrooms, a family bathroom, ensuite bathroom and private full length balcony.

Holborough Lakes is an exclusive community of homes in the heart of rural Kent. Set around a series of freshwater lakes and attractive landscaping, it offers an excellent range of facilities including the Valley Invicta Primary School, trim trails, village hall, Benjamin Rabbit Nursery and a thriving residents' association.

All homes benefit from spacious open plan living areas, private gardens with lawns and patios. Superfast fibre broadband is available; allowing you to work from home at your convenience.

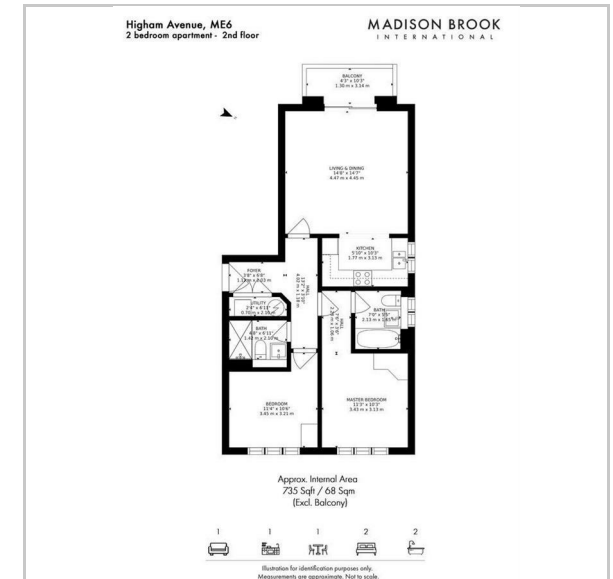


These particulars, whilst believed to be accurate are set out as a general outline only for guidance and do not constitute any part of an offer or contract. Intending purchasers should not rely on them as statements of representation of fact, but must satisfy themselves by inspection or otherwise as to their accuracy. No person in this firm's employment has the authority to make or give any representation or warranty in respect of the property.

43 Loampit Vale, Lewisham, London, SE13 7FT

Tel: 020 3946 6200 Email: lewisham@madisonbrook.com <https://madisonbrook.com/>

Floor Plan



Area Map



Energy Efficiency Graph

